

**OLYMPUS®**

---

PC TRANSCRIPTION KIT

**AS-5000**

**INSTRUCTIONS**

**EN INSTRUCTIONS**

**EN**

# DSS Player Pro Transcription Module Features

---

- Plays DSS, DSS Pro, WMA, MP3 and WAV/AIFF audio formats in the background when another application is running, such as a word processor.
- Enables foot switch control of the playback process.
- Transcription can be done by combining the playback sound with the adjustable playback speed, tone control, and noise cancellation. However, it is not possible to playback while setting the playback speed and noise cancellation simultaneously with the Macintosh version.
- Receives dictation files and sends created document files by e-mail or FTP.\*
- Expand FTP support to include Passive mode and SSL.\*
- Sorts received dictation files by sender, and automatically sends created document files.\*
- Manages created document files in association with dictation files.\*
- Voice recognition of dictation files is possible with the Dragon Naturally Speaking 8.0 and later.\*
- Supports Citrix and Terminal Service.\*
- Search filter to the List View pane columns.\*
- Audio capture function for the line-in recording.\*
- Automatic software update through Internet.\*
- Background dictation notification support.\*
- 2 modes/views of operation for Transcribe bar.\*
- Transcribing time left indicator instead of time commenced.\*

\* Windows only

- OLYMPUS IMAGING CORP. holds the copyrights for DSS Player Pro Transcription Module software and the instructions (this manual).
- Microsoft and Windows are registered trademarks of Microsoft Corporation.
- Apple, Macintosh, iMac, eMac, Mac, and PowerMac are trademarks or registered trademarks of Apple Computer, Inc.
- Intel and Pentium are registered trademarks of Intel Corporation.
- Dragon NaturallySpeaking is registered trademark of Nuance Communications, Inc.
- Other product and brand names mentioned herein may be the trademarks or registered trademarks of their respective owners.

# Table of Contents

---

## Introduction

---

Minimum Requirement ..... 4

## Getting Ready

---

Installing DSS Player Software ..... 5      Using Online Help ..... 7  
Uninstalling DSS Player Software ..... 6

## Let's Get Started

---

Running DSS Player Software ..... 8  
Connecting the RS27/RS28 Foot Switch .... 10  
Connecting the E62 Headset ..... 11  
Window Names ..... 12

## User Support

---

Technical Assistance and Support ..... 13

# Minimum Requirement

---

## Windows

<b>Operating System:</b>	Windows 2000 Professional Service Pack 4 Windows XP Home edition Service Pack 2,3 Windows XP Professional Service Pack 2,3 (32bit/64bit) Windows Vista Home Basic, Service Pack 1 (32bit/64bit) Windows Vista Home Premium, Service Pack 1 (32bit/64bit) Windows Vista Business, Service Pack 1 (32bit/64bit) Windows Vista Enterprise, Service Pack 1 (32bit/64bit) Windows Vista Ultimate, Service Pack 1 (32bit/64bit) Windows Server 2003 (32bit/64bit)
<b>CPU:</b>	Windows 2000/XP: Intel Pentium III 500MHz processor or more Windows Vista: Intel Pentium III 800MHz processor or more Windows Server 2003: Intel Pentium III 550MHz processor or more
<b>RAM:</b>	Windows 2000/XP: 128MB or more (256MB or more recommended) Windows Vista: 512MB or more (1GB or more recommended) Windows Server 2003: 256MB or more
<b>Hard drive space:</b>	Transcription Module: 70MB or more; (700MB or more with Microsoft .NET Framework Version 2.0 not installed)
<b>Drive:</b>	CD or DVD drive
<b>Display:</b>	800 x 600 pixels or more, 65536 colors more (16.77 million colors or more recommended)
<b>USB port:</b>	With the Transcription Module: One or more free ports available
<b>Audio I/O terminals:</b>	With the Transcription Module: A Microsoft WDM- or MME-compliant and Windows-compatible sound device

## Macintosh

<b>Operating System:</b>	Mac OS X 10.3.9 - 10.5
<b>CPU:</b>	Power PC G3 500MHz or more/Intel Core Solo/Duo 1.5GHz or more
<b>RAM:</b>	256MB or more (512MB or more is recommended)
<b>Hard drive space:</b>	200MB or more
<b>Display:</b>	1024 x 768 pixels or more, 32000 colors more
<b>USB port:</b>	One or more free ports

---

## Notes

- Macintosh version does not support voice recognition software.
- Currently supported OS are listed on our Web page. For the latest information, please visit the Olympus Web site at <http://www.olympus-global.com/en/global/>.

# Installing DSS Player Software

**Be sure to confirm the following before installation:**

- Exit all running applications.
- Eject the floppy disk if you are using one.
- If you are running Windows 2000/XP/Vista or Mac OS X on the network, you need to log on as an Administrator.

## Windows

For the Windows version, there is an installation method for individuals and one for administrators to install on multiple client PCs. An explanation of the installation method for individuals installing the software on a single PC will be provided here.

### 1 Insert Olympus DSS Player CD into the CD-ROM drive.

The installation program will start automatically. If the installation program does not start automatically, browse your CD-ROM drive and execute "launcher.exe".

### 2 The launcher will startup.

Select the language you would like to install from the upper-left pull-down menu and click [DSS Player Pro Installation].

### 3 The Install Wizard will begin.

Once you have consented to the licensing agreement, enter your name, company name, and license ID number (serial number).

The license ID number is printed on the license ID card included inside the Transcription Kits package.

### 4 Proceed with the installation according to the instructions on the screen.

## Macintosh

### 1 Insert Olympus DSS Player CD into the CD-ROM drive.

### 2 Double-click the CD icon.

### 3 Double-click the setup icon.

The Install Wizard will begin.

Once you have consented to the licensing agreement, follow the instructions on the screen to complete the installation.

### 4 Proceed with the installation according to the instructions on the screen.

### 5 You will be requested to restart, so conduct a restart by following the instructions.

# Uninstalling DSS Player Software

---

## Windows

- 1 Exit DSS Player program.
- 2 Click the [start] button on the taskbar.
- 3 Select [Add/Remove programs] from the [Control Panel].  
A list of installed applications is displayed.
- 4 Select [Olympus DSS Player Pro], then click the [Change/Remove] button.
- 5 Proceed with the uninstallation according to the instructions on the screen.

## Macintosh

- 1 Exit DSS Player program.
- 2 Double click “DSS Uninstaller” in [Applications] → [DSS Player] folder.  
An uninstaller is displayed.
- 3 Proceed with the uninstallation according to the instructions on the screen.

---

### Note

- The dictation files you made are stored in the [MESSAGE] folder. If you don't need them, delete them. You can confirm the location of the [MESSAGE] folder by clicking on [Options] in the [Tools] menu before uninstalling.

# Using Online Help

---

For information on the DSS Player usage and features, refer to the Online help.

To start Online help:

## Windows

- 1 Click the [start] button, then select [All Programs], [Olympus DSS Player Pro], [Transcription Module Help].
- 2 While DSS Player is running, select the [Help] menu, [Contents].
- 3 While DSS Player is running, press F1 on the keyboard.

## Macintosh

While DSS Player is running, select [DSS Player Help] from the [Help] menu.

### Note

- Online help is available after the DSS Player is installed (P.5).

# Running DSS Player Software

By default, connecting the recorder to your PC, will start the application automatically. Connect to your PC Using the Cradle.

## Windows


### Disabling Automatic Start

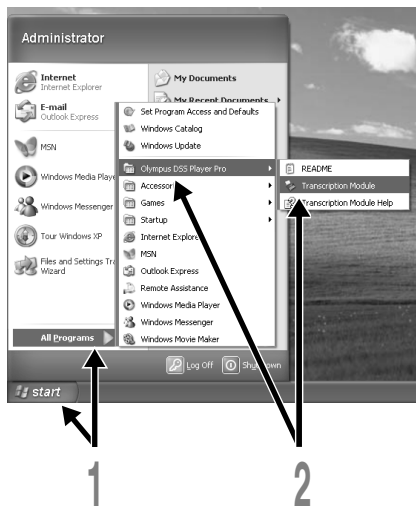
- 1 **Right-click the Device Detector in the System Tray in the lower right-hand corner of the screen, then select [Setting...].**
- 2 **Click [DSS Player Pro Transcription Module].**  
The check mark on [DSS Player Pro Transcription Module] disappears.

### Manual Start

- 1 **Click the [start] button, then select [All Programs].**  
All program menu will be displayed.
- 2 **Select [Olympus DSS Player Pro], then click [Transcription Module].**

### Note

- If you install DSS Player Pro, Device Detector that makes DSS Player run automatically when connecting Olympus Digital Voice Recorder will be installed. Device Detector will always be displayed as  icon in the task tray.





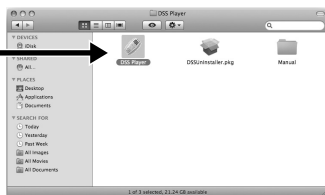
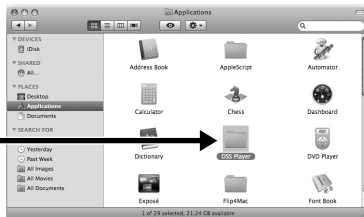
## Macintosh

### Disabling Automatic Start

- 1 Click the Dock's System Preferences.
- 2 Click Device Detector.
- 3 Turn the automatic startup setting Off.

### Manual Start

- 1 Double click the DSS Player icon for the folder in [Applications] → [DSS Player]. All program menu will be displayed.
- 2 Register user information  
The user's registration screen will be displayed at the time of initial startup. Please input the serial number. Please see the seal attached to the CD-ROM package included with the DSS Player, for the serial number. After the input has ended, click [OK] to complete the registration.



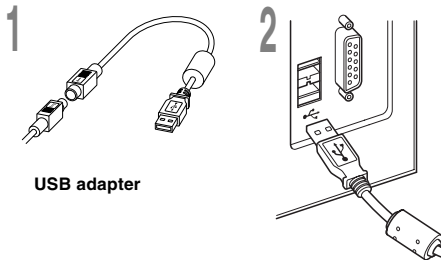
# Connecting the RS27/RS28 Foot Switch

Windows

Macintosh

## Connecting to a USB Port

- 1 Connect the foot switch cable to the USB adapter cable.
- 2 Connect the USB adapter cable to the PC's USB port.

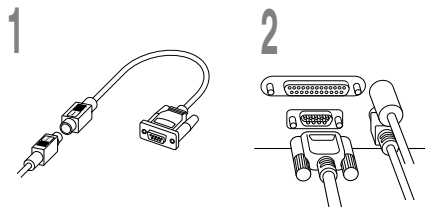


USB adapter

Windows

## Connecting to a Serial Port

- 1 Connect the foot switch cable to the serial adapter cable.
- 2 Connect the serial adapter cable to the PC's serial port.



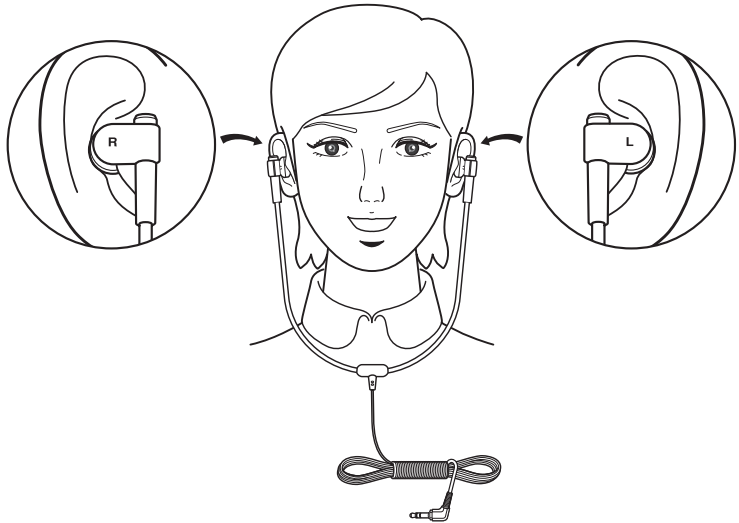
Serial adapter

### Note

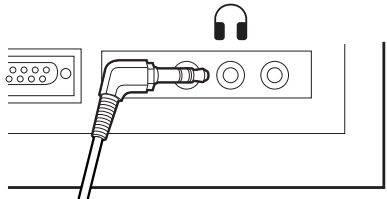
- The RS27/RS28 foot switch works only with the DSS Player.

# Connecting the E62 Headset




The E62 is a stereo headset. When playing stereo sound, wear the set properly, observing the L and R markings.



Plug the headset into the PC's earphone terminal



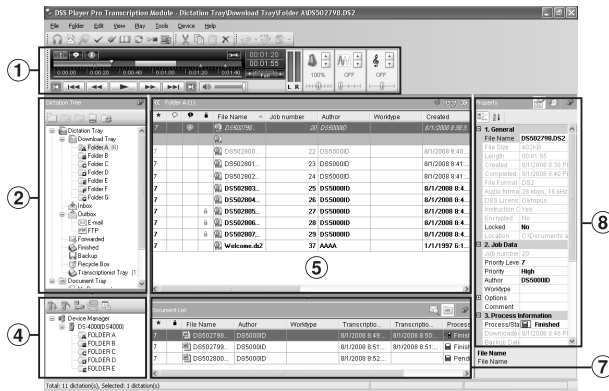
## Note

- If your PC does not have a terminal marked with , plug the headset into a terminal marked with  or .

# Window Names

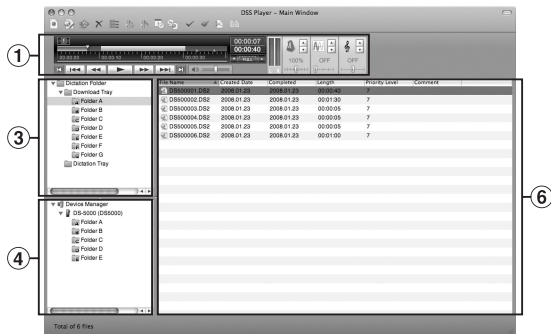
## Windows

\* Main screen is displayed when DSS Player is started.



- 1 **Playback Control Bar**  
Control buttons to play and stop dictation files.
- 2 **Transcription Tree View**  
Displays the directory structure of the folders in which dictation files and document files are stored.
- 3 **Dictation Tree View**  
Displays the directory structure of the folders in which dictation files are stored.
- 4 **Device Tree View**  
Displays the directory structure of the folders in the recorder.
- 5 **Contents List View**  
Displays the dictation and document files in the folder selected in ② and ④.

## Macintosh



- 6 **Dictation List View**  
Displays the dictation files in the folder selected in ③ and ④.
- 7 **Information View**  
② Displays the document list view in "My Document" folder, selected document preview and the transferred mail contents of voice file.
- 8 **Property View**  
Displays the folder and file properties which are selected ② and ⑤.

# Technical Assistance and Support

---

AS-5000 is part of the Olympus Professional Dictation System. Your dealer is trained to troubleshoot and fix many common problems that you may be having with this system. If you encounter problems using your AS-5000, we recommend that you contact your Olympus Professional Dealer that sold you the system. If your dealer cannot fix your problem, please call our technical hotline number or send an E-mail.

- ◆ For customers in the U.S. and Canada  
Phone: 1-888-553-4448  
E-mail: [distec@olympus.com](mailto:distec@olympus.com)
- ◆ For customers in Europe  
E-mail : [dss.support@olympus-europa.com](mailto:dss.support@olympus-europa.com)




## For customers in North and South America

### *Declaration of Conformity*

Model Number:	RS27/RS28
Trade Name:	PC TRANSCRIPTION KIT
Responsible Party:	OLYMPUS IMAGING AMERICA INC.
Address:	3500 Corporate Parkway, P.O. Box 610, Center Valley, PA 18034-0610, U.S.A.
Telephone Number:	1-888-553-4448

This device Complies with Part 15 of the FCC Rules. Operation is subject to the following two conditions:  
(1) This device may not cause harmful interference, and (2) this device must accept any interference received, including interference that may cause undesired operation.

 **Tested To Comply  
With FCC Standards**  
FOR HOME OR OFFICE USE

## Canadian RFI

This digital apparatus does not exceed the Class B limits for radio noise emissions from digital apparatus as set out in the Radio Interference Regulations of the Canadian Department of Communications.

Cet appareil numérique ne dépasse pas les limites de Catégorie B pour les émissions de bruit radio émanant d'appareils numériques, tel que prévu dans les Règlements sur l'Interférence Radio du Département Canadien des Communications.

## For customers in Europe



“CE” mark indicates that this product complies with the European requirements for safety, health, environment and customer protection.



L'indication “CE” signifie que ce produit est conforme aux exigences concernant la sécurité, la santé, l'environnement et la protection du consommateur.



La marca “CE” indica que este producto cumple con los requisitos europeos en materia de seguridad, salud, medio ambiente y protección al consumidor.



Das „CE“ Zeichen bestätigt die Übereinstimmung mit den Europäischen Bestimmungen für Betriebssicherheit und Umweltschutz.



Il marchio “CE” indica che questo prodotto è conforme alle norme della comunità europea per quanto riguarda la sicurezza, la salute, l'ambiente e la protezione del consumatore.



Знак “CE” обозначает, что этот продукт соответствует европейским требованиям по безопасности, охране здоровья, экологической безопасности и безопасности пользователя.



This symbol [crossed-out wheeled bin Directive 2006/66/EC Annex II] indicates separate collection of waste batteries in the EU countries. Please do not throw the batteries into the domestic refuse. Please use the return and collection systems available in your country for the disposal of the waste batteries.



This symbol [crossed-out wheeled bin WEEE Annex IV] indicates separate collection of waste electrical and electronic equipment in the EU countries. Please do not throw the equipment into the domestic refuse. Please use the return and collection systems available in your country for the disposal of this product.

Produit applicable: Foot Switch



Ce symbole [Poubelle rayée conformément à la directive annexe 2006/66/EC annexe II] indique que la collecte des batteries usagées se fait séparément dans les pays EU. Veuillez ne pas jeter les batteries dans les ordures ménagères. Veuillez utiliser les systèmes de collecte disponibles dans votre pays pour l'enlèvement des batteries usagées.



Le symbole [poubelle sur roue barrée d'une croix WEEE annexe IV] indique une collecte séparée des déchets d'équipements électriques et électroniques dans les pays de L'UE. Veuillez ne pas jeter l'équipement dans les ordures domestiques. A utiliser pour la mise en rebut de ces types d'équipements conformément aux systèmes de traitement et de collecte disponibles dans votre pays.

Produit applicable: Pédale



Este símbolo [Directiva 2006/66/EC Anexo II sobre contenedores] indica que se deben separar las pilas usadas en los países de la UE. Por favor no tire las pilas en la basura normal. Por favor utilice los sistemas de reciclaje que existan en su país para tirar las pilas.



Este símbolo [un contenedor de basura tachado con una X en el Anexo IV de WEEE] indica que la recogida de basura de equipos eléctricos y electrónicos deberá tratarse por separado en los países de la Unión Europea. No tire este equipo a la basura doméstica. Para el desecho de este tipo de equipos utilice los sistemas de devolución al vendedor y de recogida que se encuentren disponibles.

Producto aplicable: Interruptor de pedal



Dieses Symbol [durchgestrichene Mülltonne nach Direktive 2006/66/EU Anhang II] weist auf die getrennte Rücknahme von Batterien und Akkumulatoren in EU-Ländern hin. Bitte werfen Sie Batterien und Akkumulatoren nicht in den Hausmüll. Informieren Sie sich über das in Ihrem Land gültige Rücknahmesystem und nutzen Sie dieses zur Entsorgung.



Dieses Symbol [durchgestrichene Mülltonne nach WEEE Anhang IV] weist auf die getrennte Rücknahme elektrischer und elektronischer Geräte in EU-Ländern hin. Bitte werfen Sie das Gerät nicht in den Hausmüll. Informieren Sie sich über das in Ihrem Land gültige Rücknahmesystem und nutzen dieses zur Entsorgung.

Anwendbare Produkte: Fußschalter



Questo simbolo [cassonetto con ruote, barrato, Direttiva 2006/66/EU Allegato II] indica la raccolta differenziata di apparecchiature elettriche ed elettroniche nei paesi dell'UE. Non gettate le batterie nei rifiuti domestici. Usate i sistemi di raccolta rifiuti disponibili nel vostro paese per lo smaltimento delle batterie usate.



Questo simbolo [contenitore di spazzatura barrato come illustrato nell'allegato IV della direttiva WEEE] indica una raccolta separata dei rifiuti di apparecchiature elettriche ed elettroniche nei paesi dell'Unione Europea. Si prega di non gettare questo dispositivo tra i rifiuti domestici. Si prega di utilizzare i sistemi di raccolta e di recupero disponibili per lo smaltimento di questo tipo di dispositivi.

Prodotto applicabile: Interruttore a pedale



Этот символ [перечеркнутый мусорный бак на колесах, Директива 2006/66/ЕС, приложение II] указывает на раздельный сбор отработанных батарей в странах ЕС. Пожалуйста, не выбрасывайте батареи вместе с бытовыми отходами. Пожалуйста, для утилизации отработанных батарей пользуйтесь действующими в Вашей стране системами возврата и сбора для утилизации.



Этот символ [перечеркнутая мусорная урна WEEE на колесах, приложение IV] обозначает раздельный сбор электрических и электронных отходов в России. Пожалуйста, не выбрасывайте изделия в бытовой мусоропровод. Используйте системы возврата и сбора (если таковые имеются) для утилизации отходов вышеуказанных типов.

Применимое изделие: Педальный переключатель



# **OLYMPUS®**

---

## **OLYMPUS IMAGING CORP.**

Shinjuku Monolith, 3-1 Nishi-Shinjuku 2-chome, Shinjuku-ku, Tokyo 163-0914, Japan. Tel. 03-3340-2111  
<http://www.olympus.com>

## **OLYMPUS IMAGING AMERICA INC.**

3500 Corporate Parkway, P.O.Box 610, Center Valley, PA 18034-0610, U.S.A. Tel. 1-888-553-4448  
<http://www.olympusamerica.com>

## **OLYMPUS IMAGING EUROPA GMBH**

(Premises/Goods delivery) Wendenstrasse 14-18, 20097 Hamburg, Germany. Tel. 040-237730  
(Letters) Postfach 10 49 08. 20034 Hamburg, Germany.  
<http://www.olympus-europa.com>

## **OLYMPUS UK LTD.**

Vision House 19 Colonial Way Watford Herts WD24 4JL. Tel.01923-83-1000  
<http://www.olympus.co.uk>